



## ORION II IQHA BULKHEAD CHILLED BEAM

### KEY FEATURES

- Length 23.6" and width 39.4" - 63"
- Available in 4 widths
- Provides ventilation, heating and cooling
- High airflow per width
- Adjustable primary airflow with 36 nozzle settings
- Easy installation — fastening brackets, with all controls fitting in the chilled beam tray and adjustable installation height.
- Low installation height
- Bulkhead mount
- Energy efficient, saving money on operating and life-cycle costs.
- Perforated swing down bottom panel for easy access.
- Beam is available without a discharge grille for applications with grilles by others, or with optional grilles with spring clamp installation with fixed blades, horizontally adjustable blades, or horizontally and vertically adjustable blades.
- Easy to clean and maintain.

The ORION II IQHA is an active, bulkhead mounted chilled beam used for ventilation, heating and cooling. Inconspicuous with sound pressure less than 20 dB, the ORION II IQHA, is perfect for hotel rooms, hospital rooms and offices.

With three different grille options, and adjustable induction grille height, the ORION II IQHA can easily be adapted to suit various room geometries. In addition to its fluidity, the ORION II IQHA also offers unequalled energy control, with options such as single or double deflection diffusers with adjustable blades.

Adding a Pi<sup>®</sup> actuator to the ORION II IQHA increases its flexibility and makes it more efficient, because it adds demand-control ventilation, which allows chilled beams to adjust primary ventilation air volume to match occupancy demands. The Pi<sup>®</sup> actuator also permits the ORION II IQHA to be pressure independent, allowing the beam to work with any duct system or to be retrofitted.



**ADJUSTABLE  
NOZZLES**



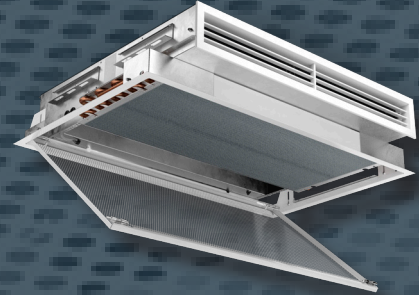
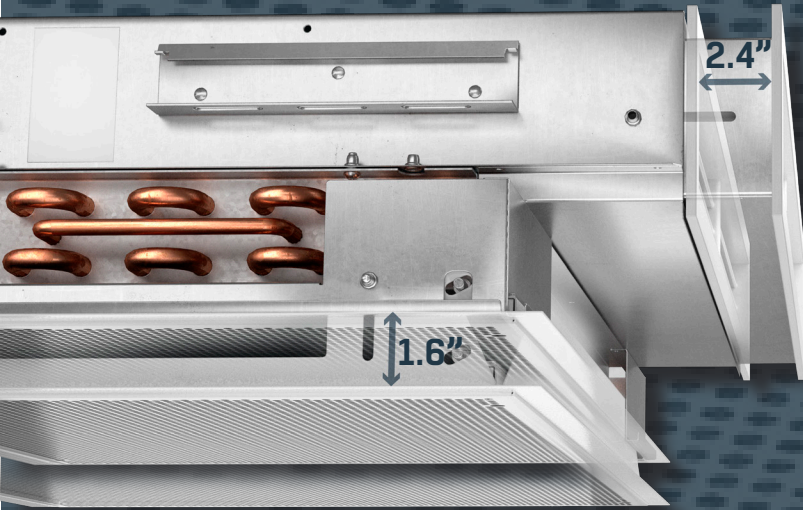
**VERY LOW  
NOISE**



**AIRFLOW  
CONTROL**

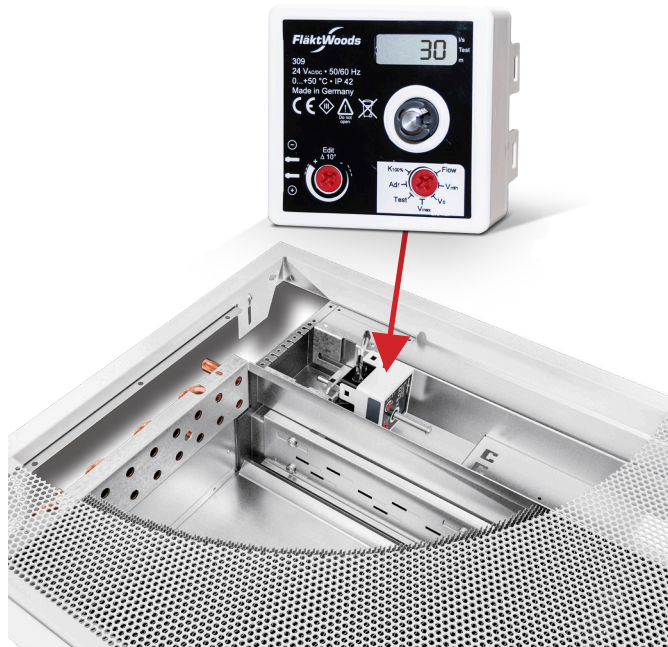
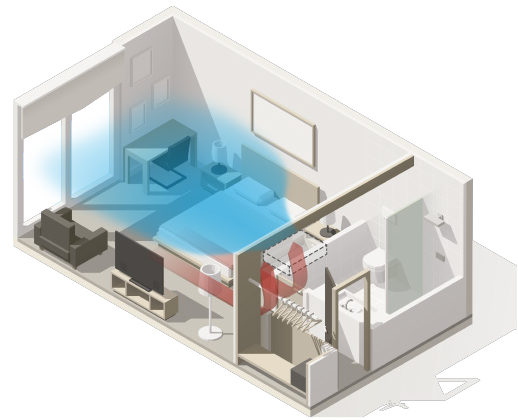
## EASY INSTALLATION

- Telescopic front grille and adjustable height, speed up adaptations on-site.
- The coil is designed to be easily flipped, to suit installation needs.
- The front plate can hinge from either side, for quick access to beam controls.



When added to the ORION II IQHA, the patented Pi<sup>®</sup> actuator, adapts airflow to match the occupancy levels of a room. The Pi<sup>®</sup> actuator comes has three modes: unoccupied, standard occupancy and high occupancy. These modes not only increase a room's comfortability, but they also help by saving money and energy, eliminating the need to treat extraneous air. The Pi<sup>®</sup> actuator can quickly deliver a wide variety of airflows ranging from 10.6 - 127.1 CFM at 0.01 psi, depending on a room's current needs.

## A bulkhead mounted active chilled beam without compromise.



For more information on the ORION II IQHA, to access the SELECT chilled beam selection tool, or find your local sales representative visit [www.semcohvac.com](http://www.semcohvac.com).

## EXCELLENCE IN SOLUTIONS

FläktGroup<sup>®</sup> SEMCO<sup>®</sup>  
1800 East Pointe Drive, Columbia, MO 65201  
573.443.1481  
sales@semco.com

FläktGroup<sup>®</sup>  
SEMCO<sup>®</sup> SPECIALIZED  
HEALTHY  
AIR SOLUTIONS